

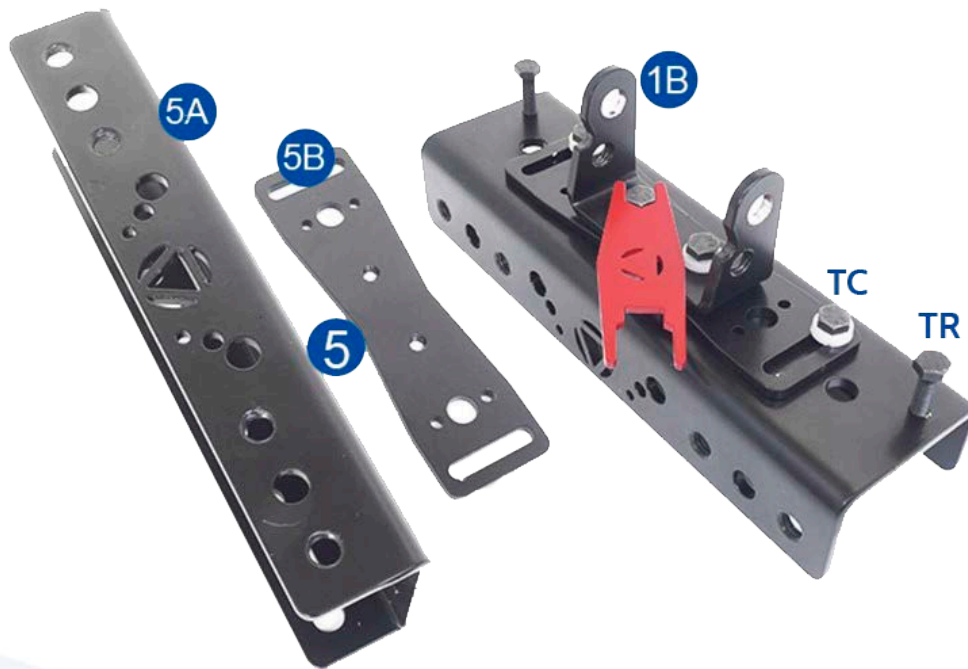
KRM-V3 PRO

with support

Assembly instructions



Karma V3 PRO Screen Printing Machine – KLP



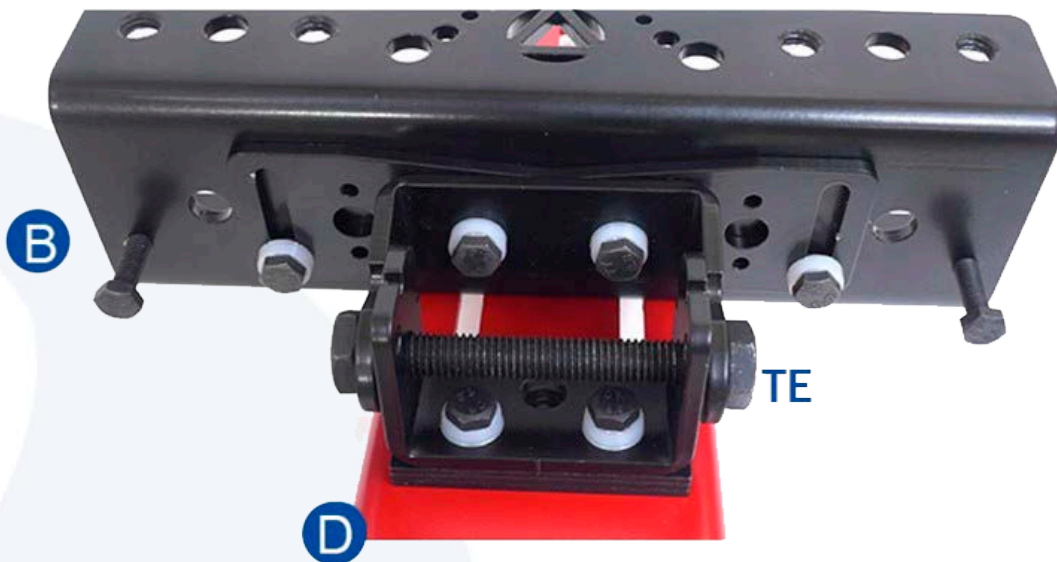
1. Screw parts **5A** and **5B** using the bolts and washers **TC**.
2. Place part **1B** on top of module **5**, using the 2 short screws and washers. Adjust the screws with the **SKY** key (red). Part **1B** must be in the right position, as shown in the picture.
3. Screw in the **TR** bolts without screwing them in completely, as shown in the picture.



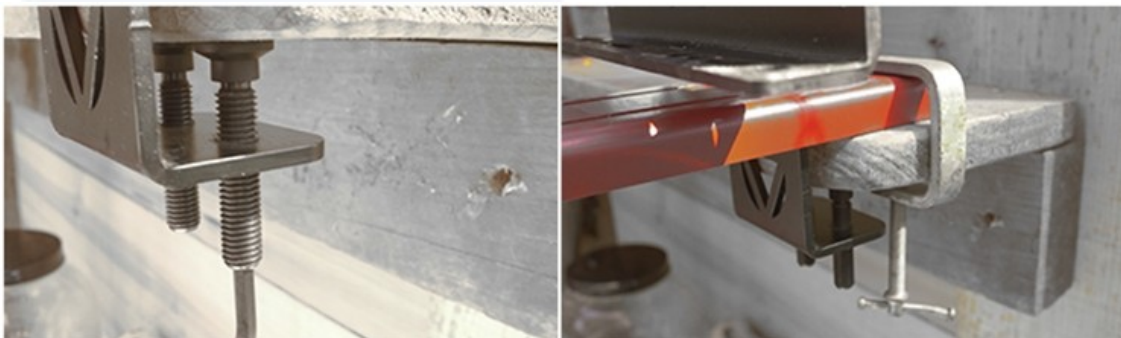
4. Place module **PX** [3 height-adjustment plates] on module **1A** with the screws and washers. Fit them together, but do not screw them together.
5. Place parts **1A** and **PX** on module **4** [the support], as shown in the picture.



6. Insert and tighten the **TP** screws in module **6**, as shown in the picture.
7. Place module **6** on module **D** and tighten the bolts with the **SKY** key.



8. Connect modules **B** and **D** with the long bolt and its nut **TE**. Hold the head of the screw and tighten the nut. Use the **SKY** key to tighten it until the arm or module **B** can be firmly raised and lowered.

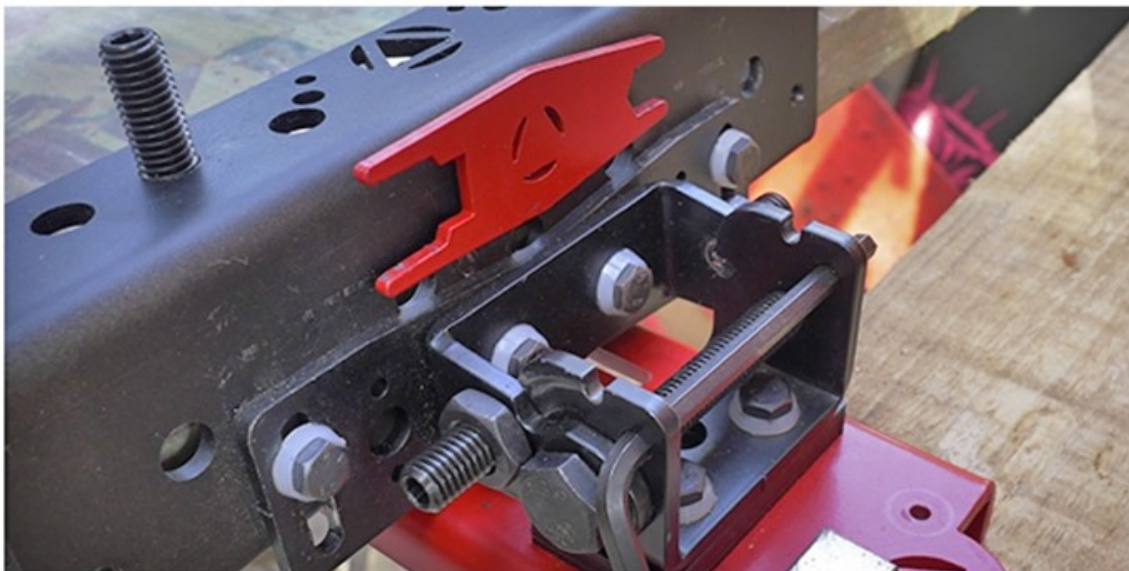


9. Once all the modules have been assembled, it's time to fix the machine to the table.

10. Fasten the screws simultaneously using the **Allen** key, but don't tighten them completely. Start with one first and then the other until they are fully adjusted.
11. We recommend screwing the machine to the table with a clamp, as shown in the picture.



12. Place the support with 2 long bolts, washers and nuts.
13. On the support, position the screen centred on the arm and screw in the 4 **TP** screws alternatively.
14. Screw in the 2 short bolts with **TB** on each side with the **Allen** key. Adjust until the screen stays up on its own and can be raised or lowered easily.
15. Screw the nuts on the **TB** bolts. Each time you adjust the **TB** bolts, you will have to loosen the nuts.
16. Insert the **Allen** key through the two holes on the shaft. The **Allen** key will work as a stopper when raising the screen.
17. Magnetise the SKY key and stick it to the arm.



BRILDOR
everything for personalisation